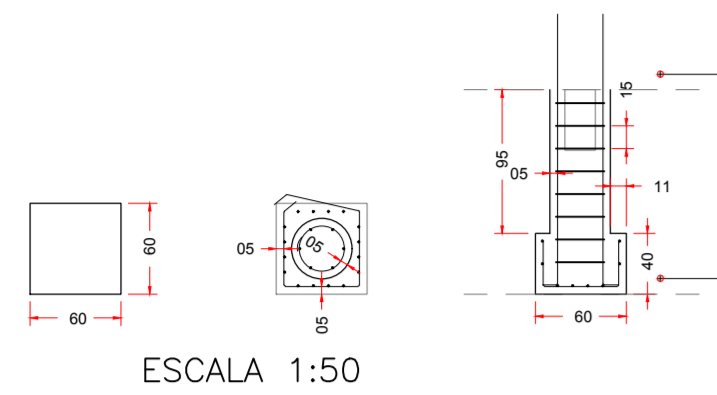


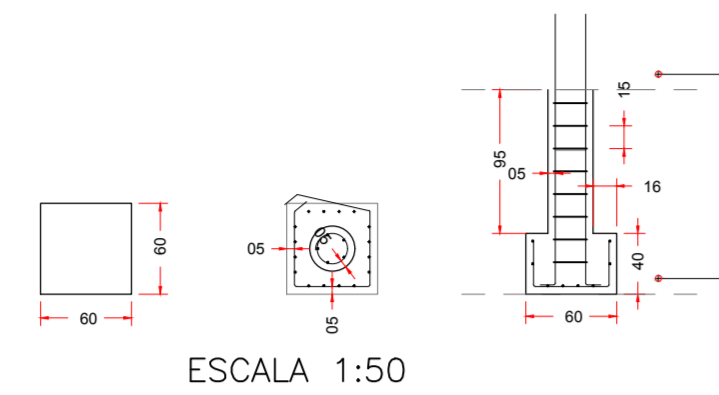
DETALHES - FORMAS

S01 e S02



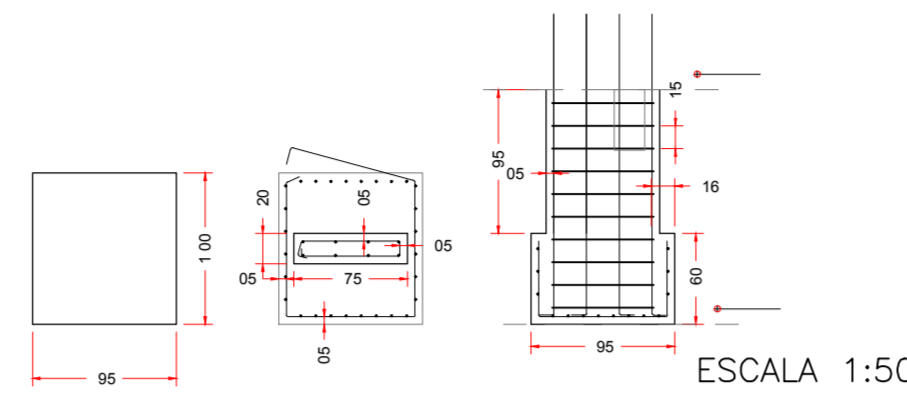
ESCALA 1:50

S09, S12, S17 e S20



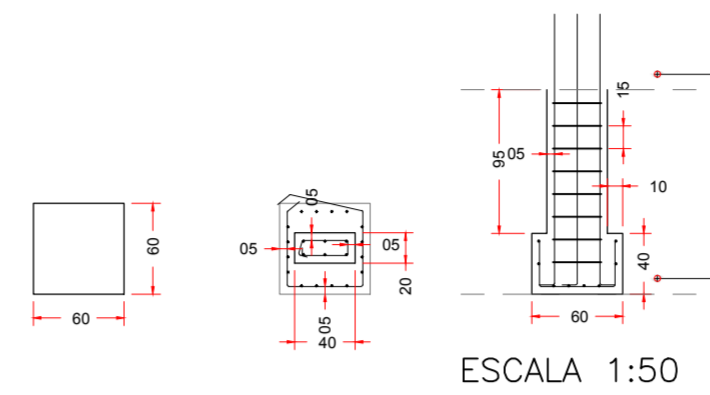
ESCALA 1:50

S03, S04, S05, S06, S07 e S08



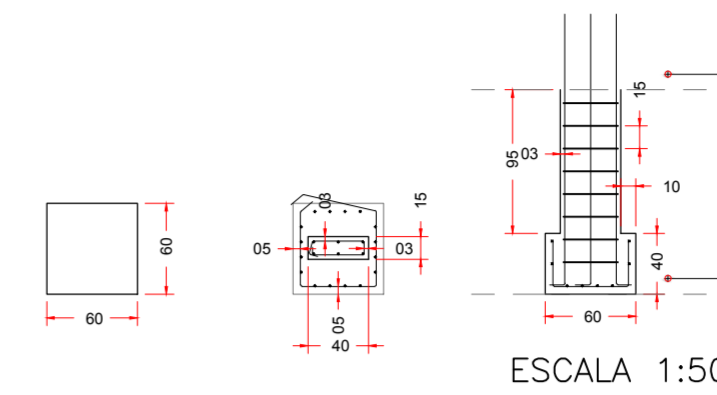
ESCALA 1:50

S10, S11, S18, S19, S21, S27, S29, S33 e S34



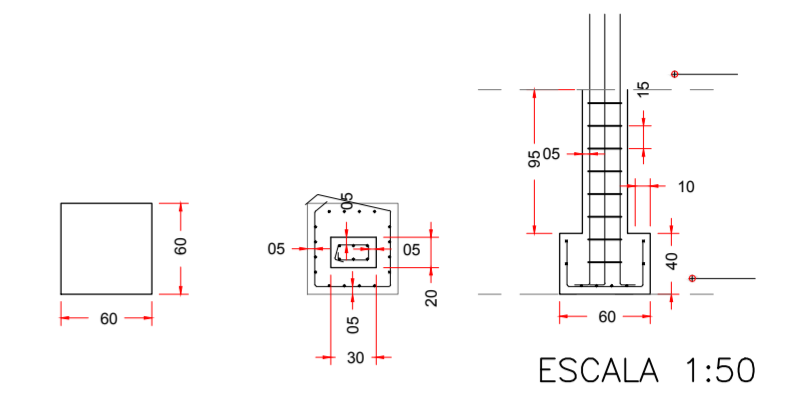
ESCALA 1:50

S36 e S37



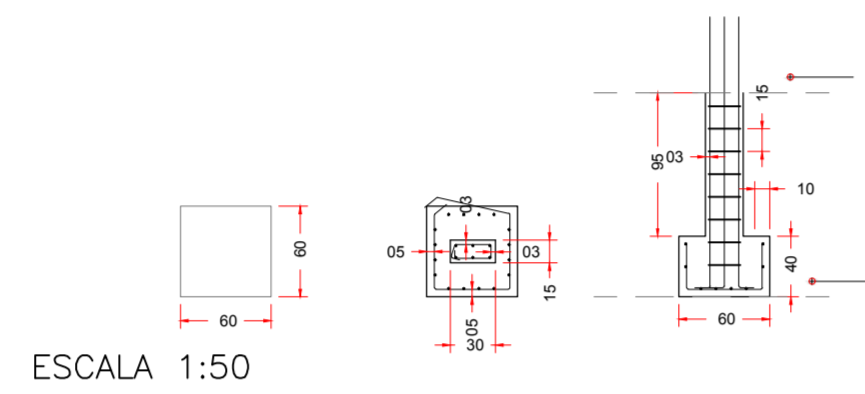
ESCALA 1:50

S29, S30, S35, S36, S38, S42, S43, S44 e S45



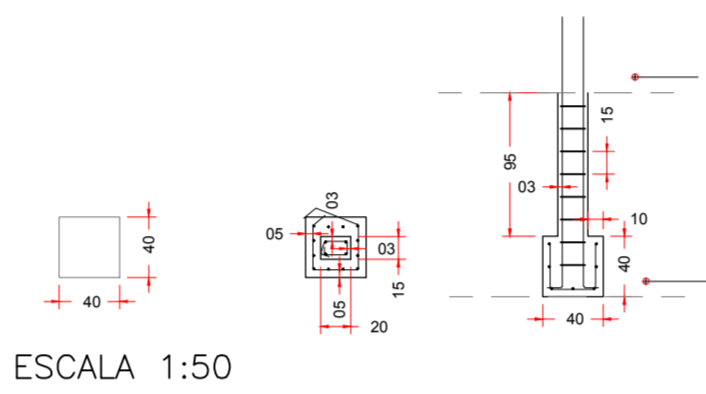
ESCALA 1:50

S22, S23, S25, S26, S31 e S32



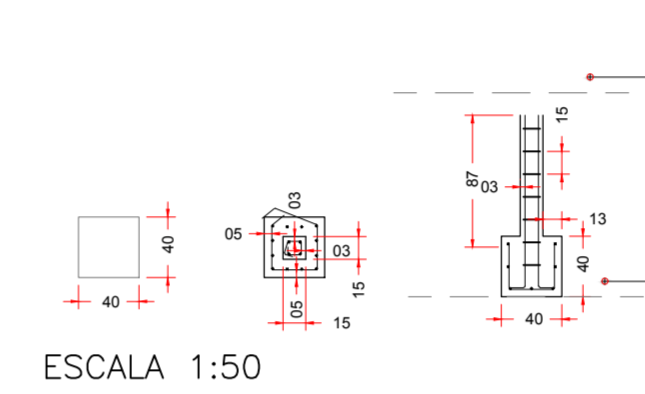
ESCALA 1:50

S40 e S41

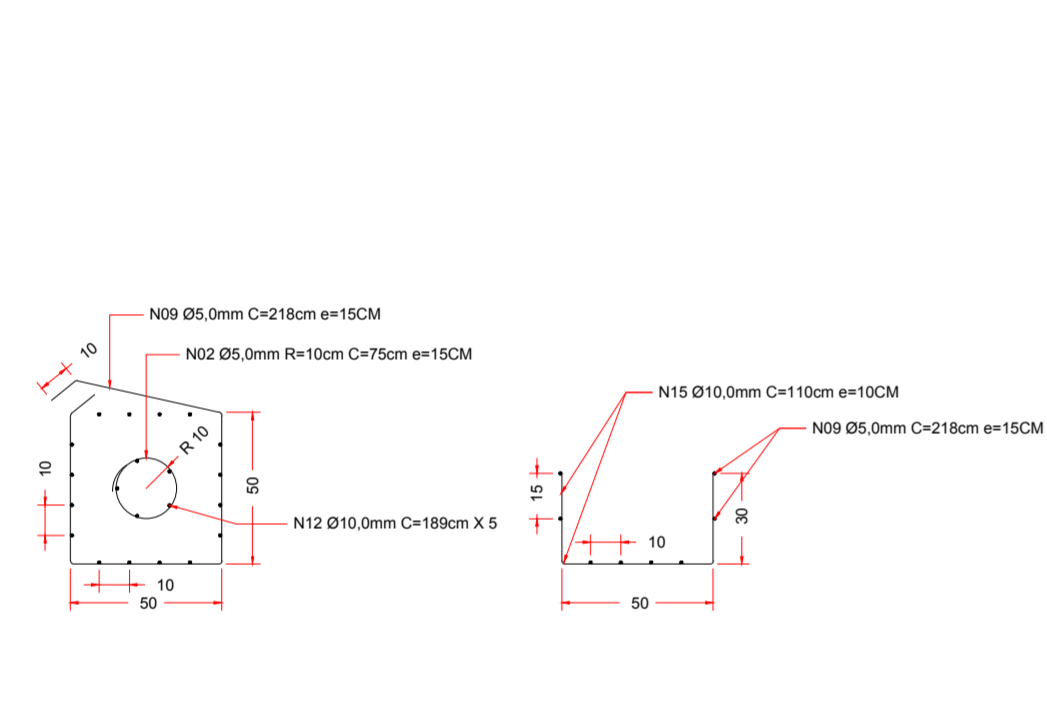


ESCALA 1:50

S13, S14, S15, S16 e S24

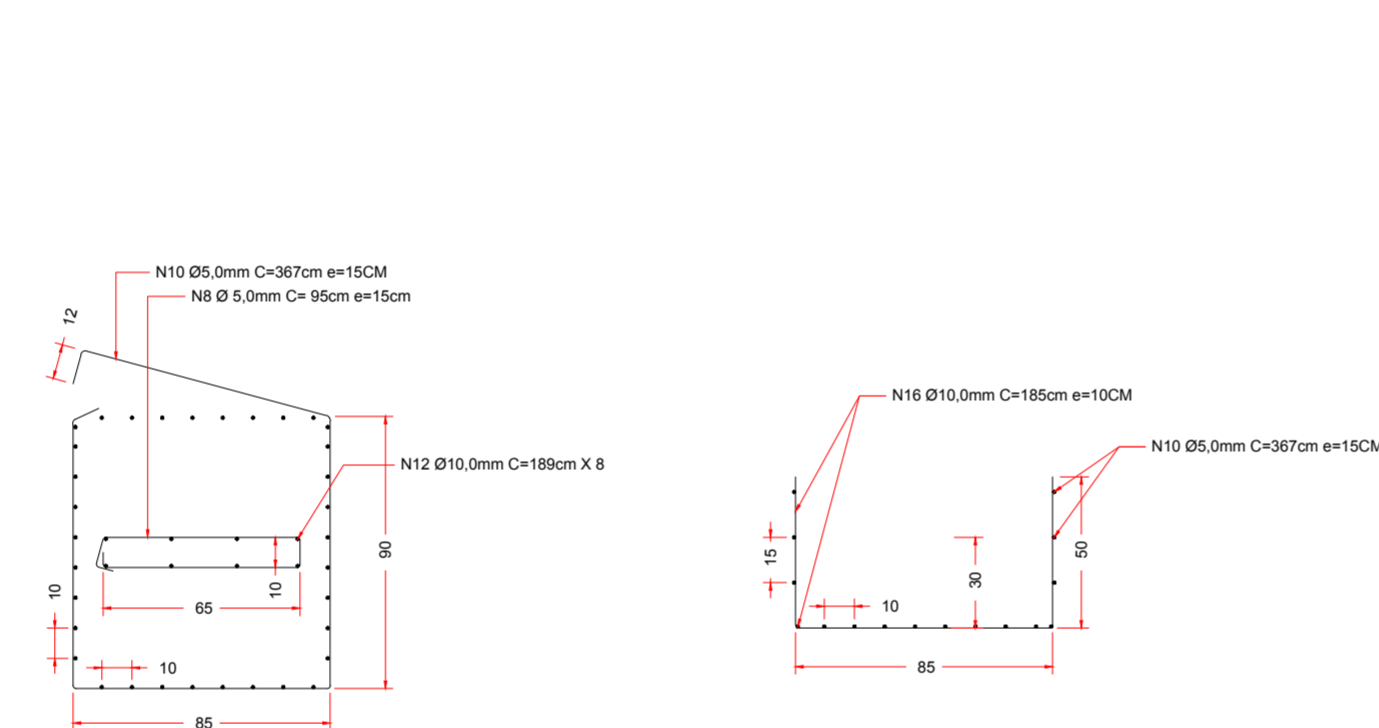


ESCALA 1:50



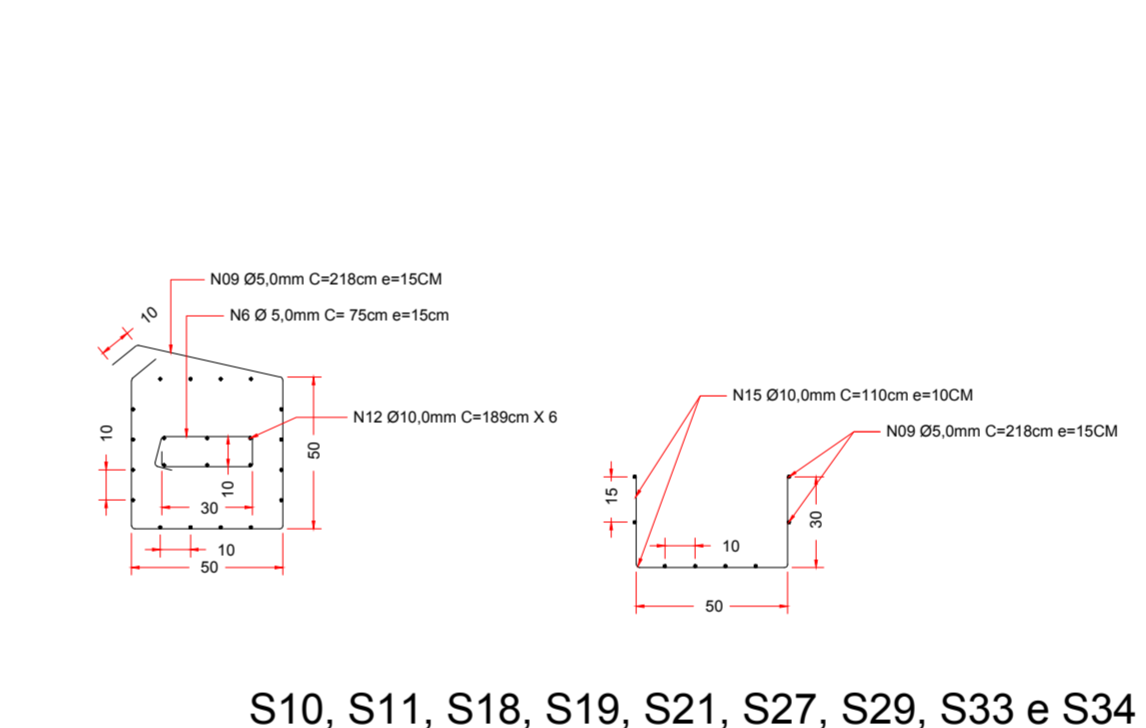
S09, S12, S17 e S20

ESCALA 1:25



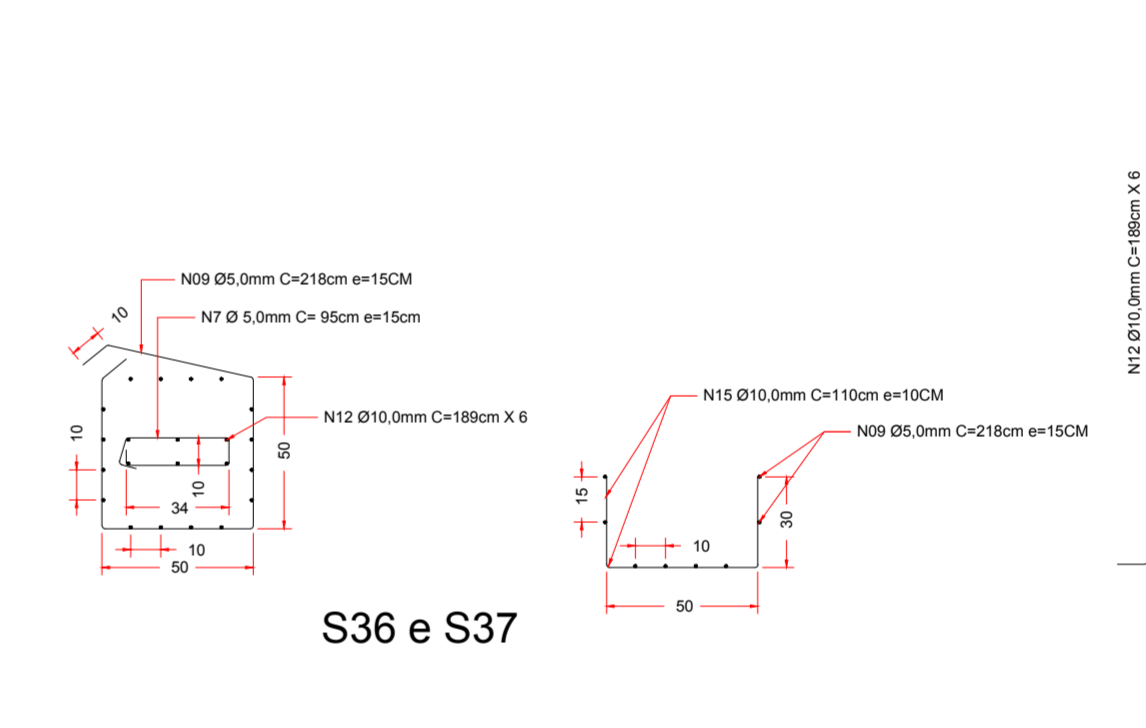
S03, S04, S05, S06, S07 e S08

ESCALA 1:25



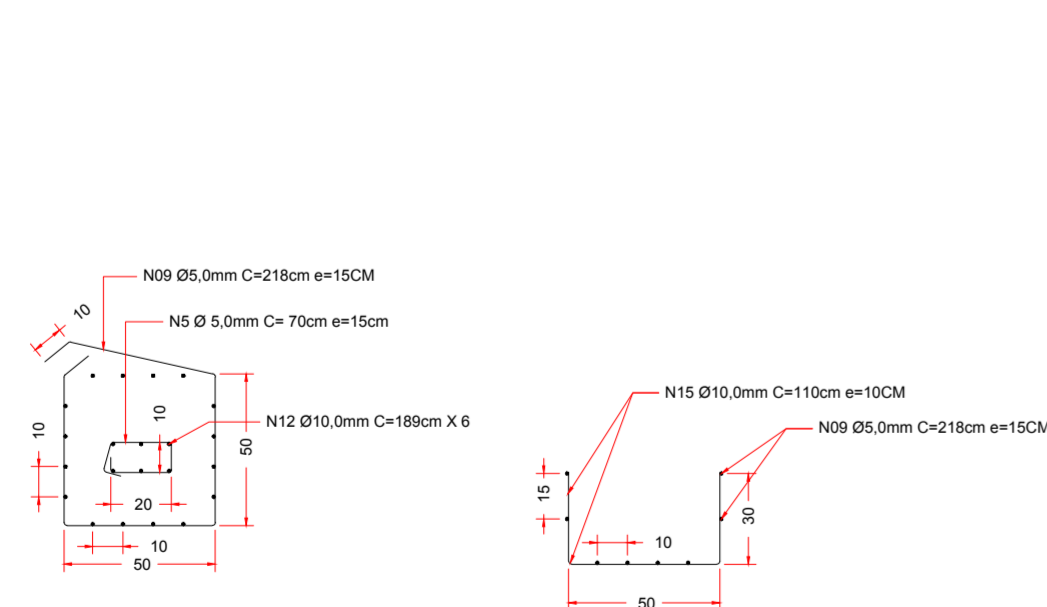
S10, S11, S18, S19, S21, S27, S29, S33 e S34

ESCALA 1:25



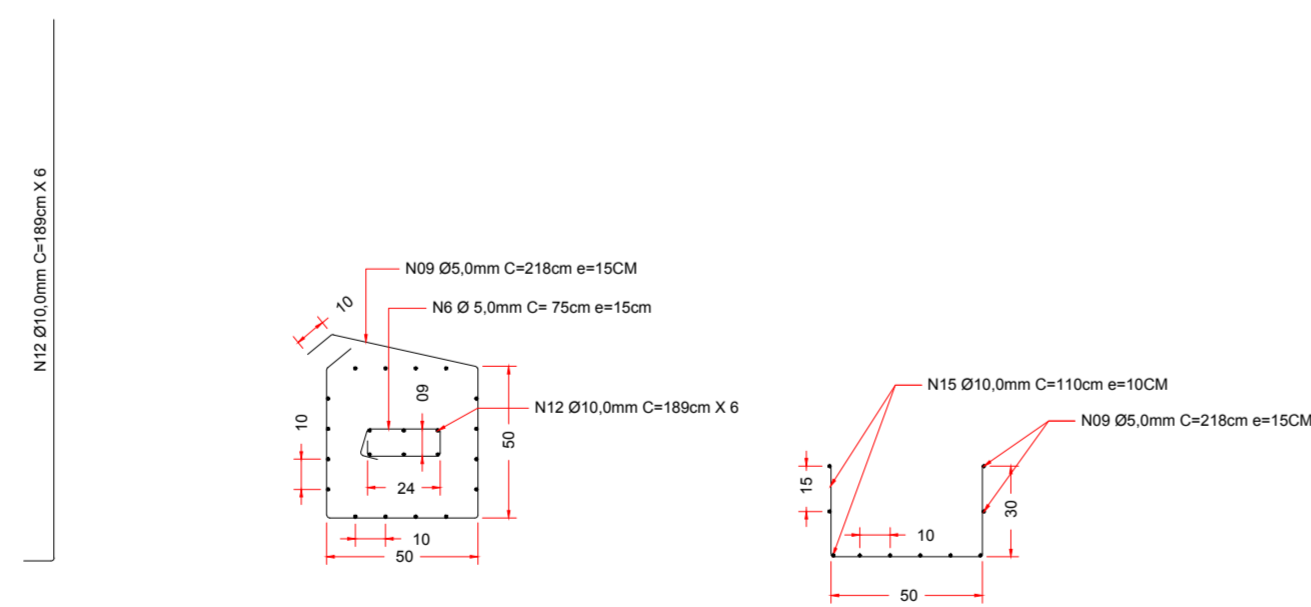
S36 e S37

ESCALA 1:25



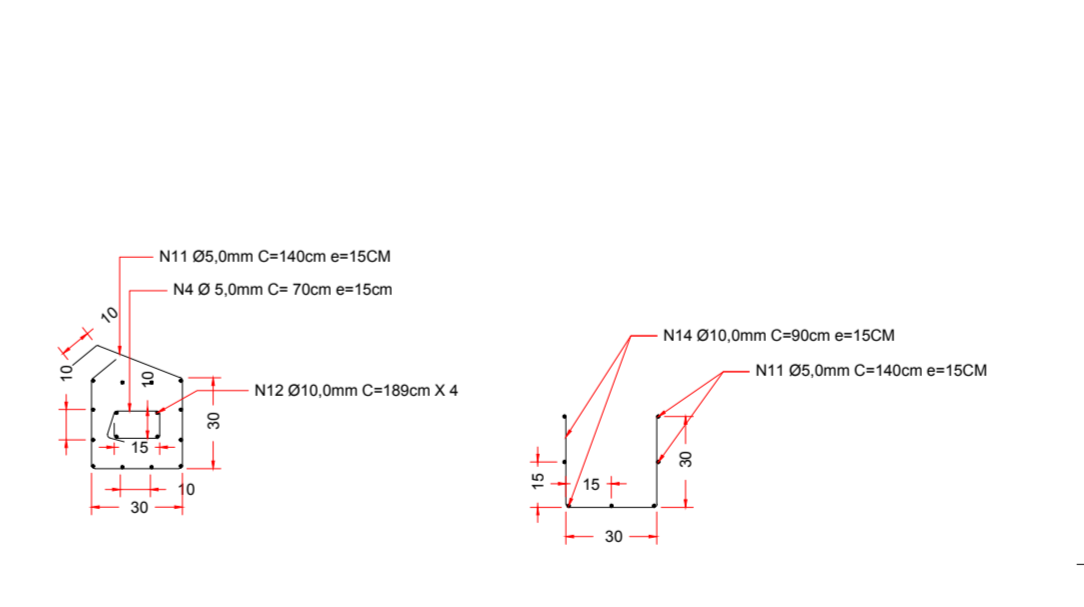
S29, S30, S35, S36, S38, S42, S43, S44 e S45

ESCALA 1:25



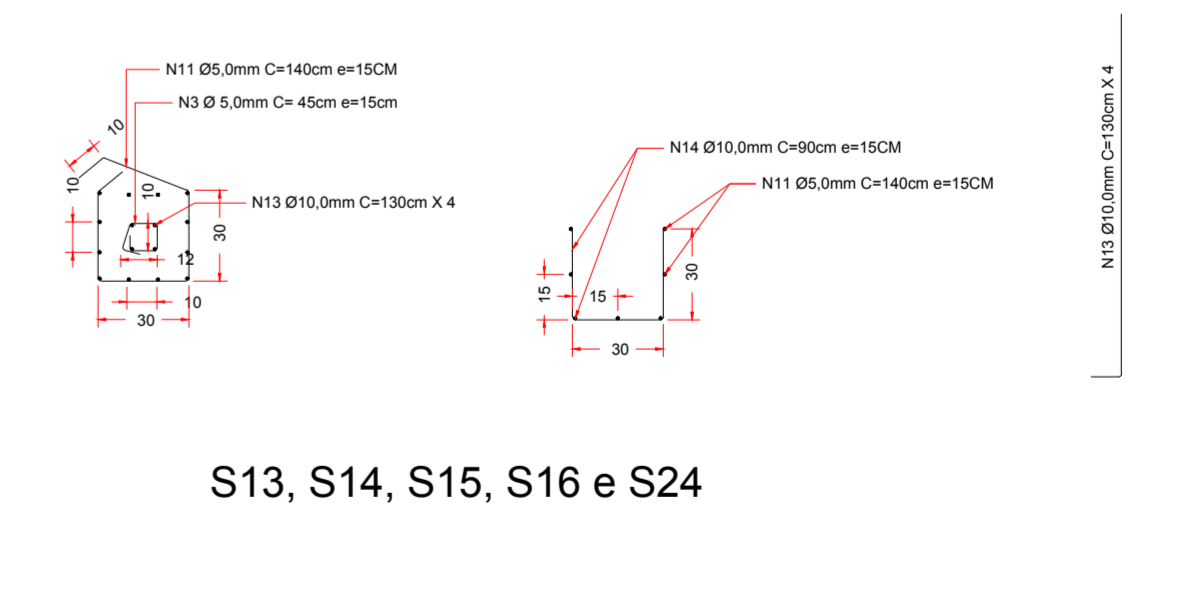
S22, S23, S25, S26, S31 e S32

ESCALA 1:25



S40 e S41

ESCALA 1:25



S13, S14, S15, S16 e S24

ESCALA 1:25

| Nº | DATA | REVISÃO | RESPONSÁVEL |
|----|------------|------------|-------------------|
| 01 | 03/01/2018 | REVISÃO 00 | JEFFERSON SANCHEZ |
| | | | |
| | | | |
| | | | |

A

B

C

D

PROJETADO POR:

| | |
|-------------------------------------|-------------|
| DES.: JEFFERSON SANCHEZ | DEZEMBRO/17 |
| PROJ.: JEFFERSON SANCHEZ | |
| RESP. TECN.: CAROLINE VAZ RODRIGUES | |
| ASS.: CAU A72611-7 | |

PREFEITURA MUNICIPAL DE ILHA COMPRIDA
ESTÂNCIA BALNEÁRIA
AVENIDA BEIRA MAR 11000 - CEP 11925-000

| | |
|--|------------------|
| OBRA: PROJETO CENTRO DE CONVÍVIO SOCIAL | Nº DES.: |
| ENDEREÇO: AVENIDA CANDAPUI SUL - BALNEÁRIO SAMBURÁ | FL: 02/12 |
| ASSUNTO: PROJETO ESTRUTURAL - DET. FORMA E AÇO DAS SAPATAS | REV.: 00 |
| | ESCALA: indicada |